

FRONT EXPONENTIAL AND SPYRAL HORNS

© 3D Acoustic Research, January 2010

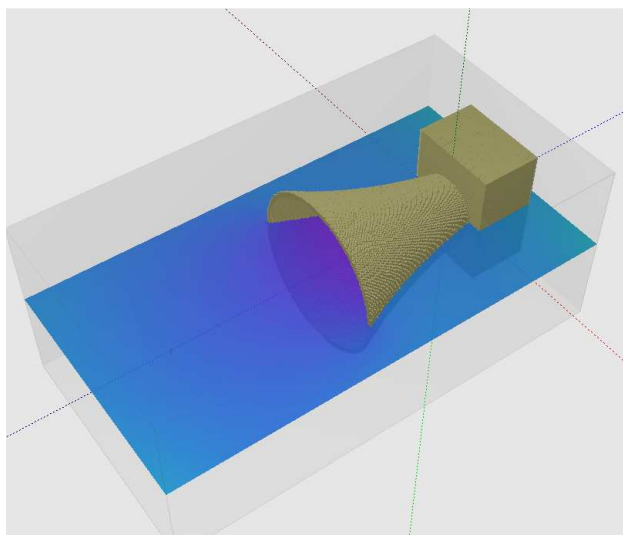
www.3DAR.ru

In this test we simulate front exponential horn with Response 3D. Horn length is 1m, input radius 18 cm, output radius 50 cm, driver parameters (Altec 416Z) are given in Fig.1.

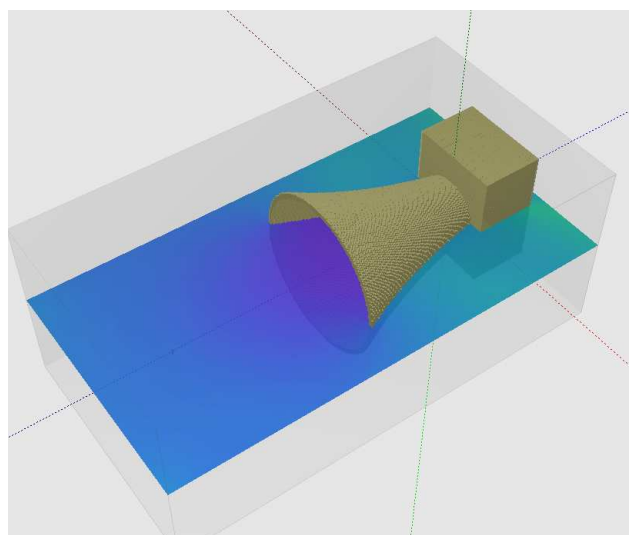
Re	11.500	Ohm	Mms	61.518	Gramm
Sd	854.00	cm ²	Cms	0.565	mm/N
Fs	27.000	Hz	Rms	2.739	Ns/m
Vas	600.00	Liters	BL	21.083	T*m
Qes	0.270		R	16.487	cm
Qms	3.810		Le	5.460	mH
			Qts	0.25	

Fig.1

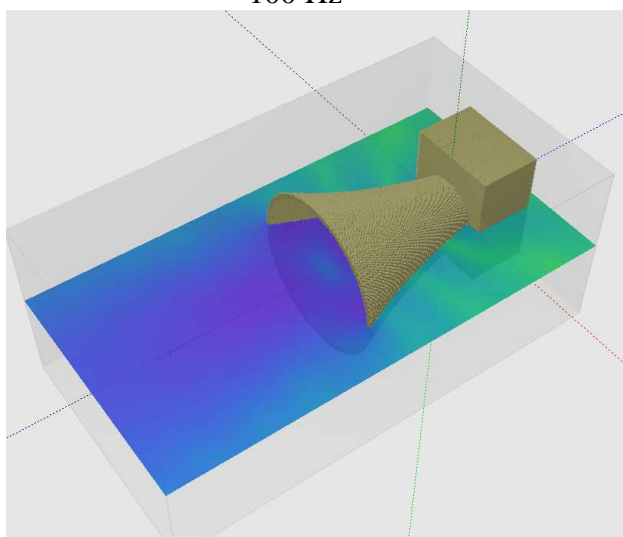
Figs 2 and 3 show calculated SPL distribution at various cross-sections. Fig 3 gives SPL vs. frequency.



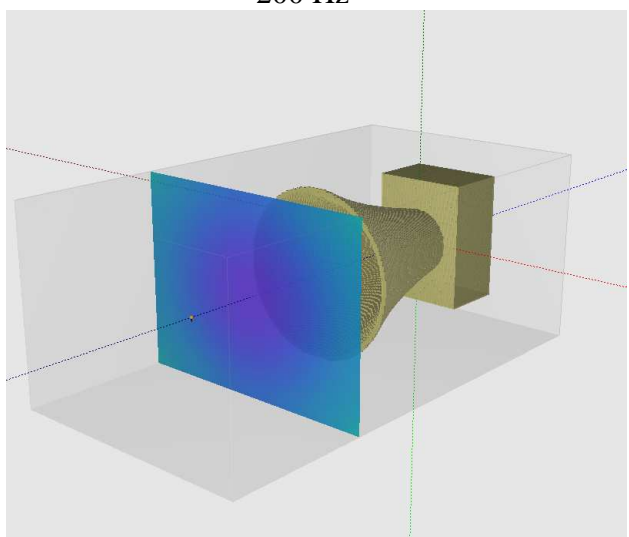
100 Hz



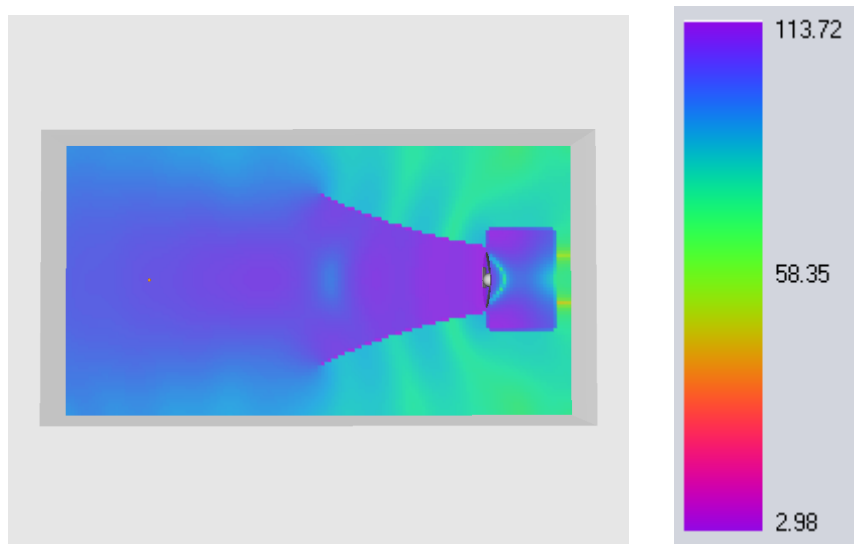
200 Hz



500 Hz

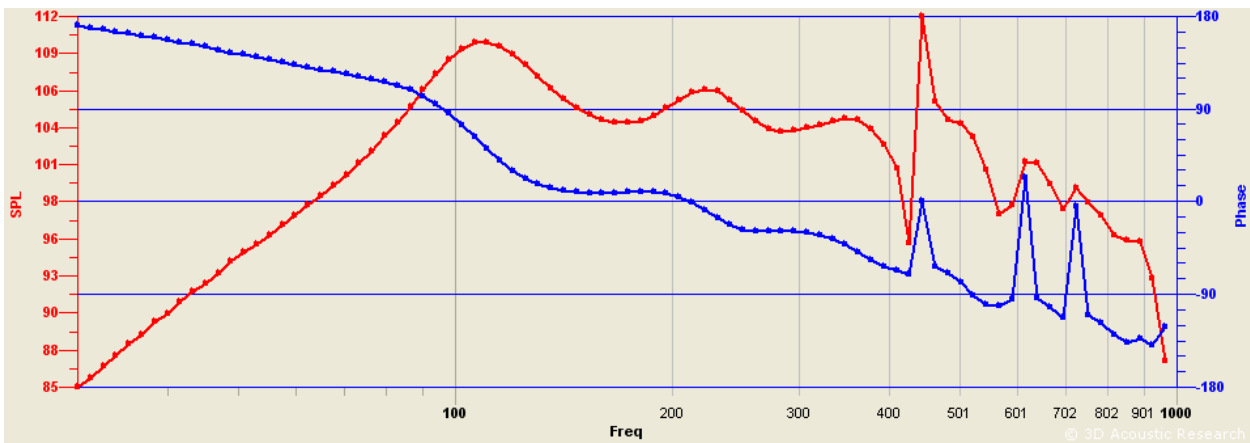


500 Hz

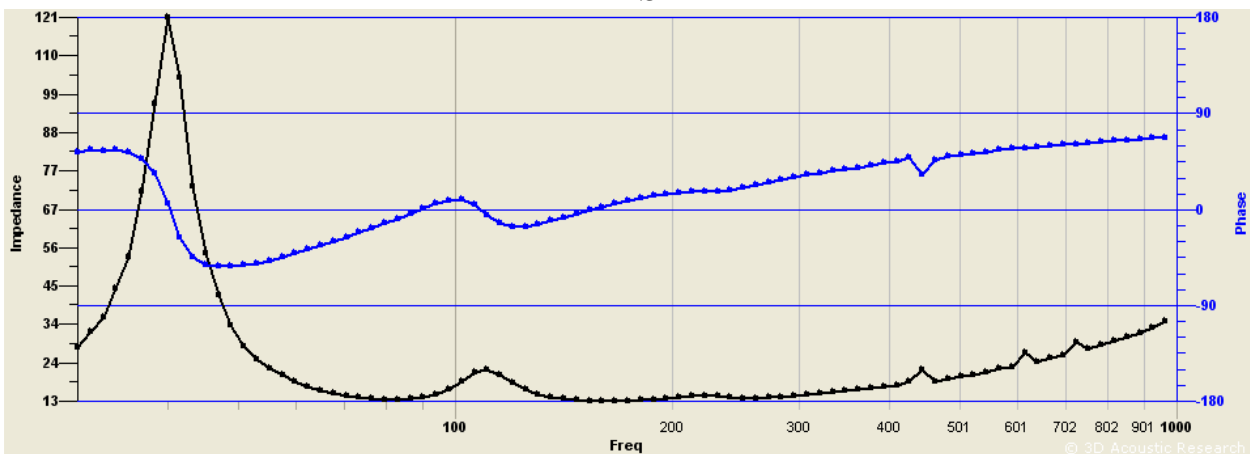


500 Hz

Fig. 2 SPL distribution, dB



SPL



Impedance

Fig.3 SPL and electrical impedance vs. frequency (1m on axis from horn exit)

We didn't build real horn and take measurements. To compare the results one can use another program, i.e. HornResponse, which indeed is based on 1D horn equation.

Hornresp - Input Parameters

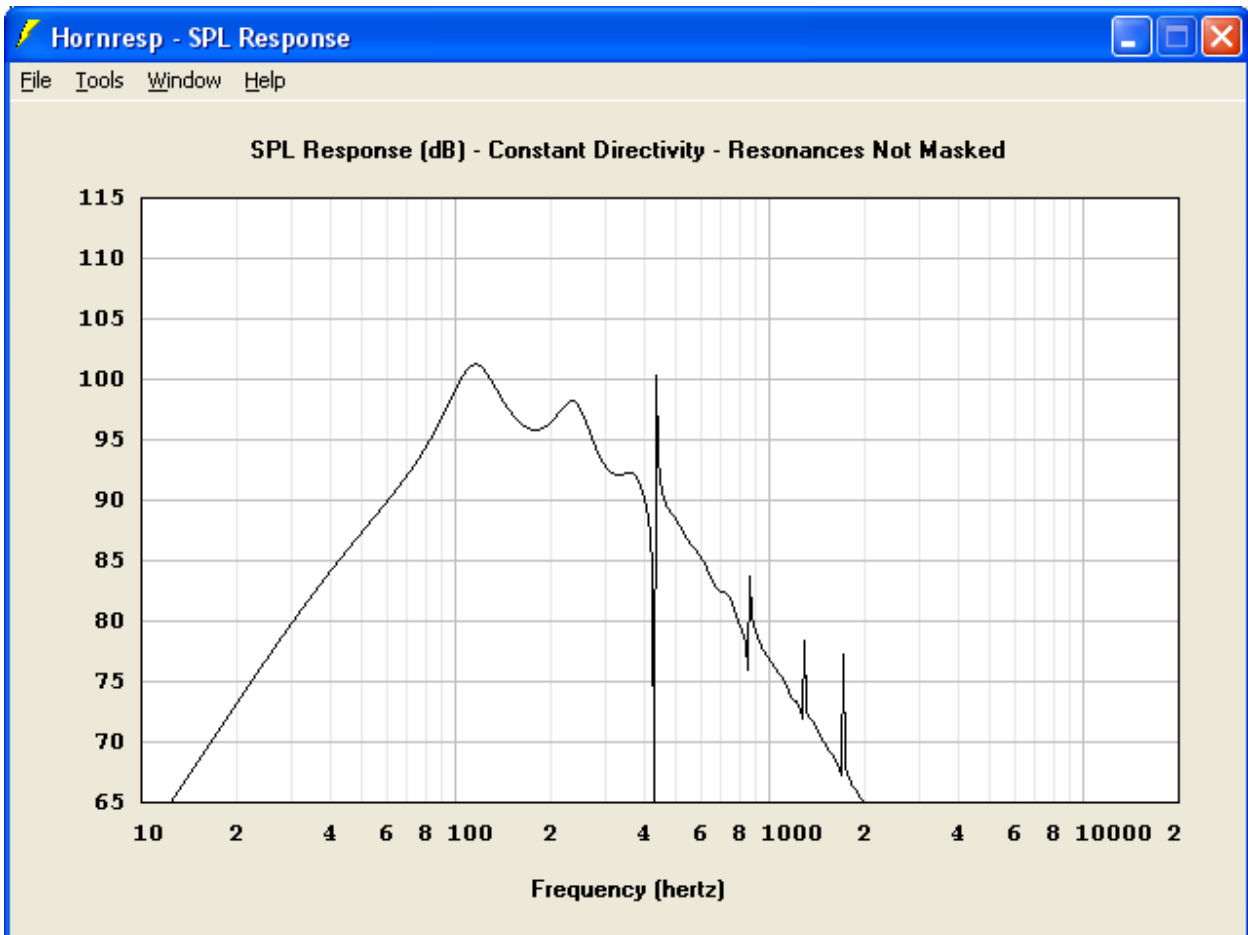
File Tools Window Help

Ang	4.0 x Pi	Eg	2.83	Rg	0.00	Cir	0.51
S1	1018.00	S2	7853.00	Exp	100.00	F12	55.93
S2	0.00	S3	0.00	L23	0.00	AT	10.42
S3	0.00	S4	0.00	L34	0.00	F34	0.00
S4	0.00	S5	0.00	L45	0.00	F45	0.00

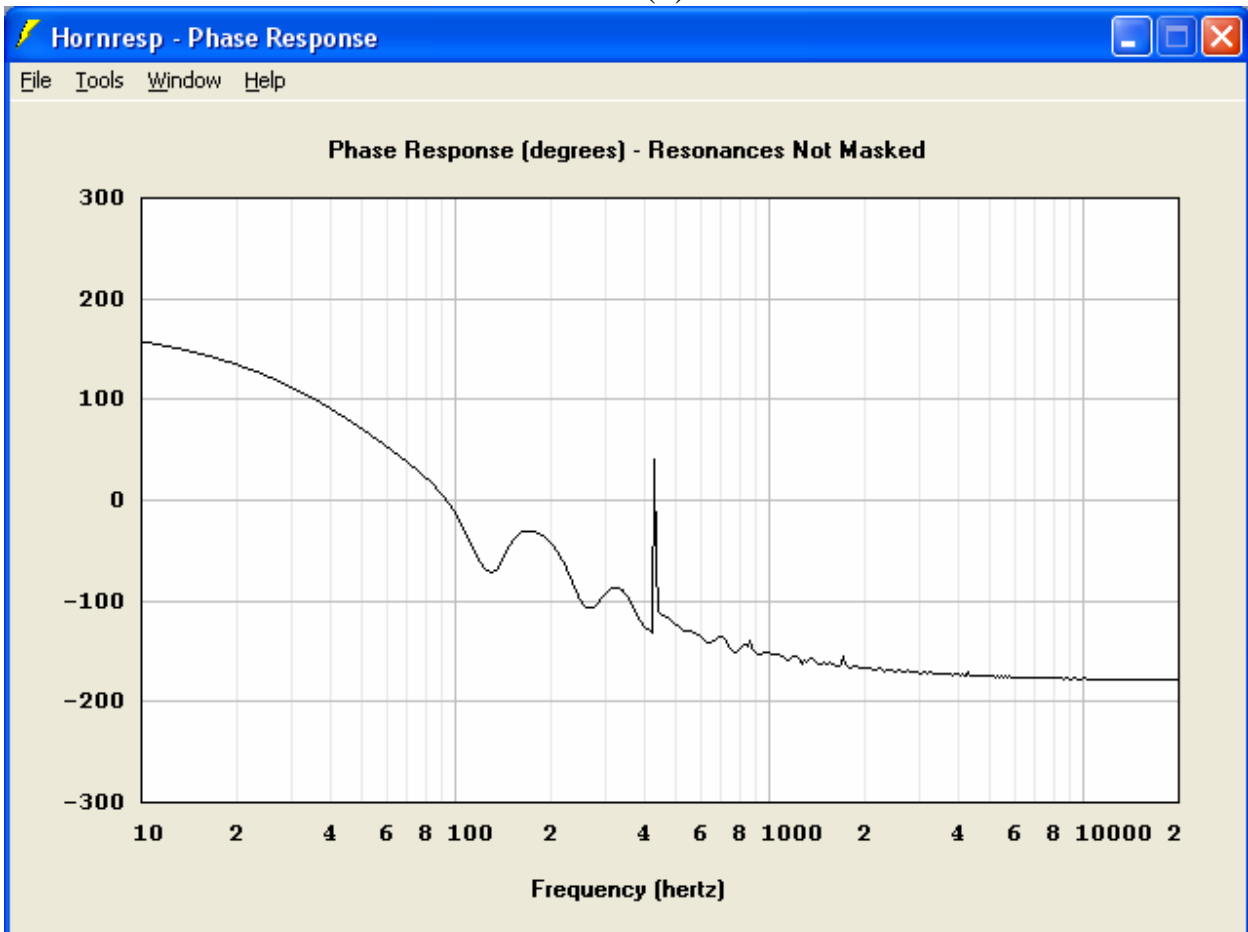
Sd	854.00	Cms	5.56E-04	Mmd	60.30	Re	11.50
Bl	21.00	Rms	2.72	Le	5.43	Nd	1
Vrc	192.00	Ap	0.00	Vtc	0.00		
Lrc	40.00	Lpt	0.00	Atc	1018.00		

Comment: Altec 416

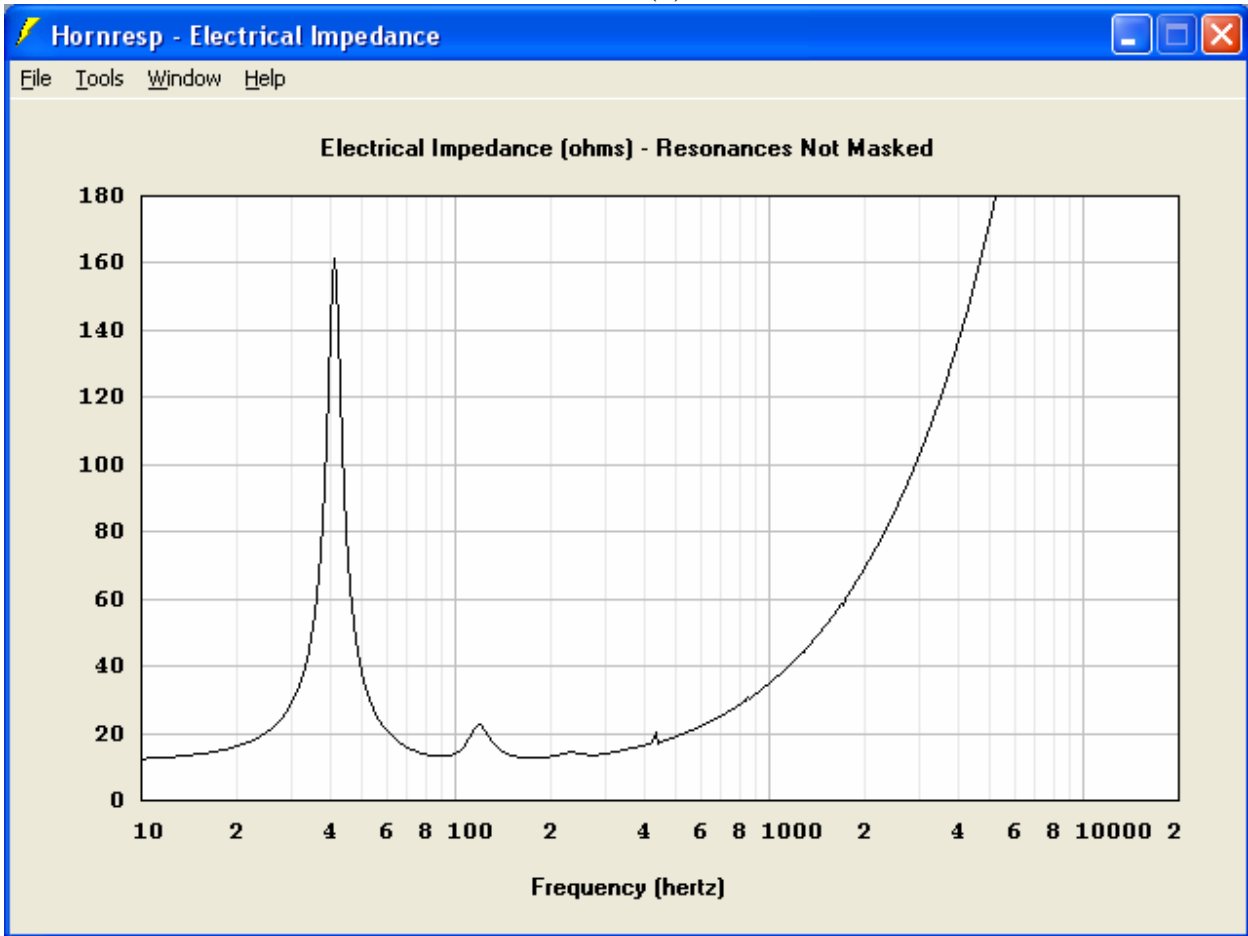
(a)



(b)



(c)



(d)

Fig. 4 HornResponse simulation of the horn

Comparing figures we conclude that our results are in good agreement with HornResponse.

SPIRAL HORN

Because Response 3D can deal with complex shape enclosures it is a joy to add a spiral to the horn. This spiral increases the path length traveled by waves, however, the cross section in the direction of wave number becomes smaller. Particular spiral we added divides internal horn volume into two sections and rotates 720 degrees (2 turns) around the axis on the horn length of 1 m (Fig.5). We never will build such spiral horn but Fig. 6 and 7 show what is obtained by simulation.

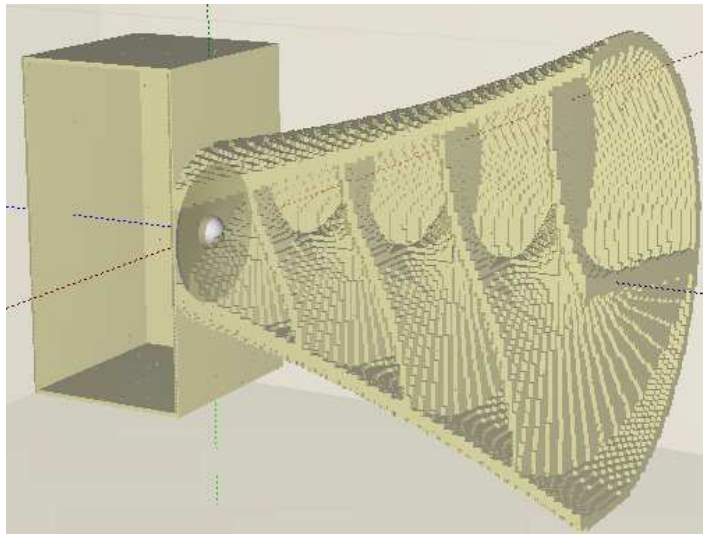
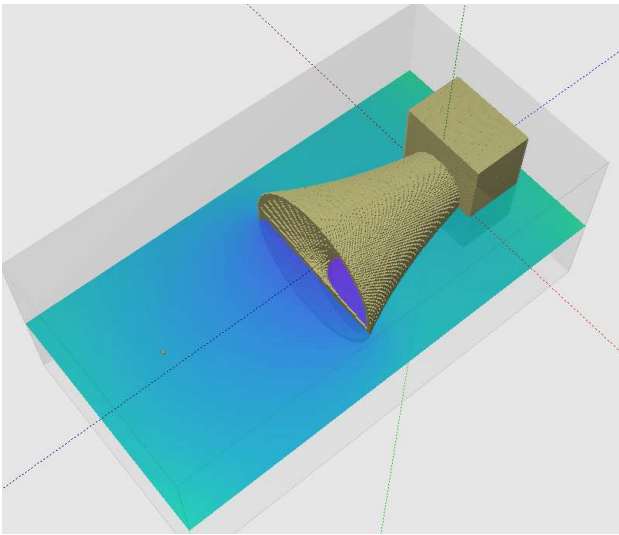
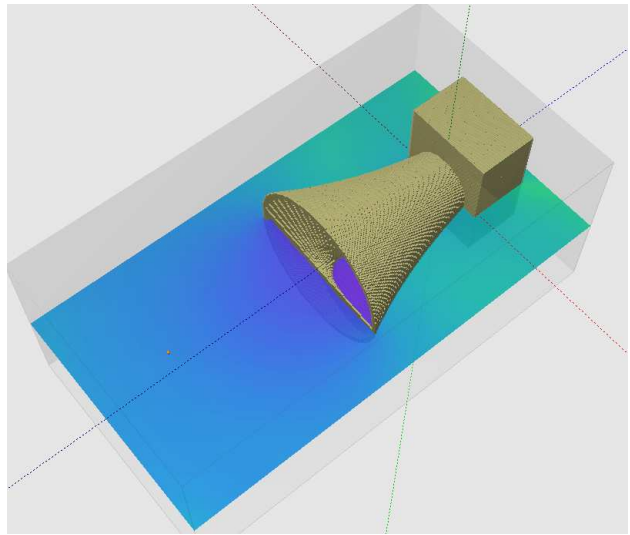


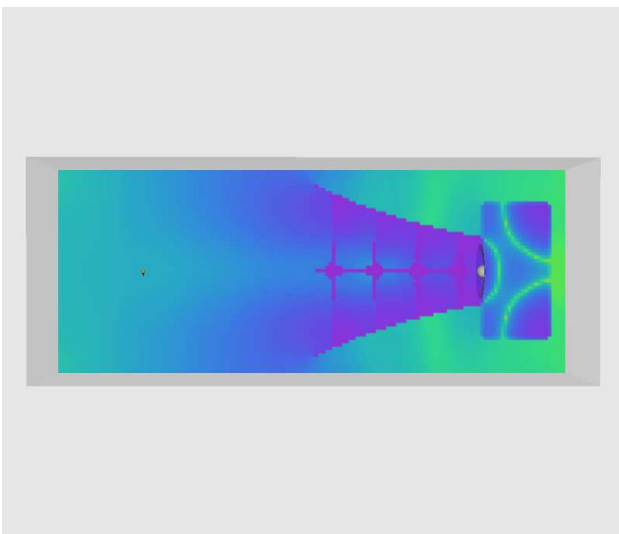
Fig 5



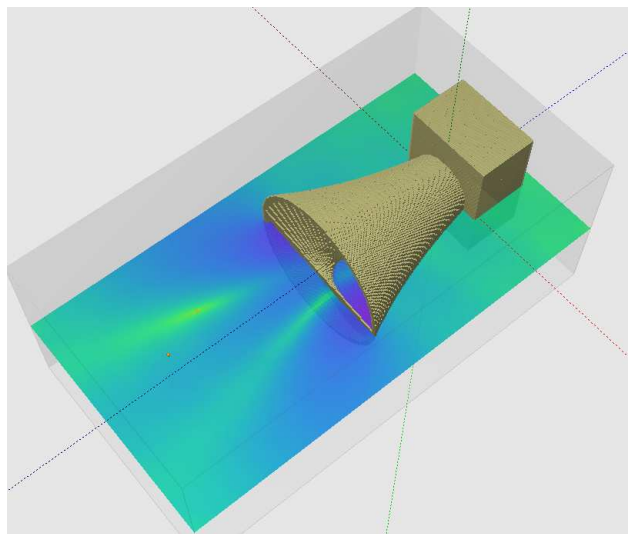
100 Hz



200 Hz



500 Hz



500 Hz

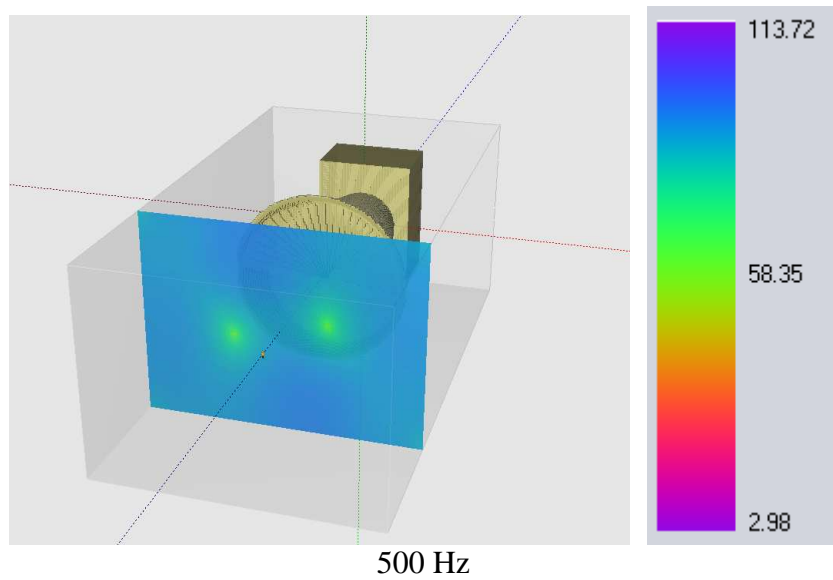


Fig. 6 SPL distribution in spiral horn, dB

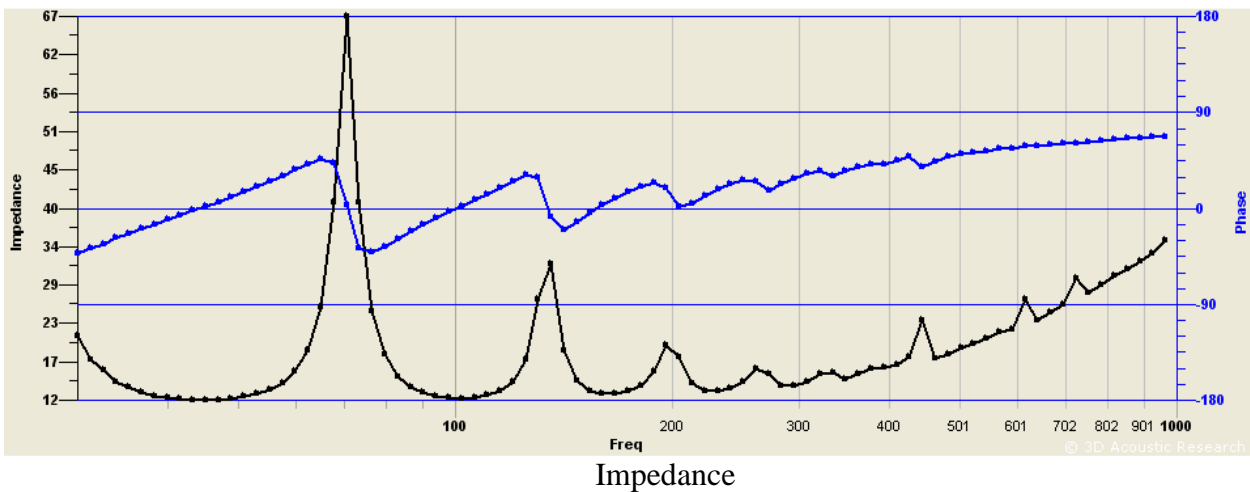
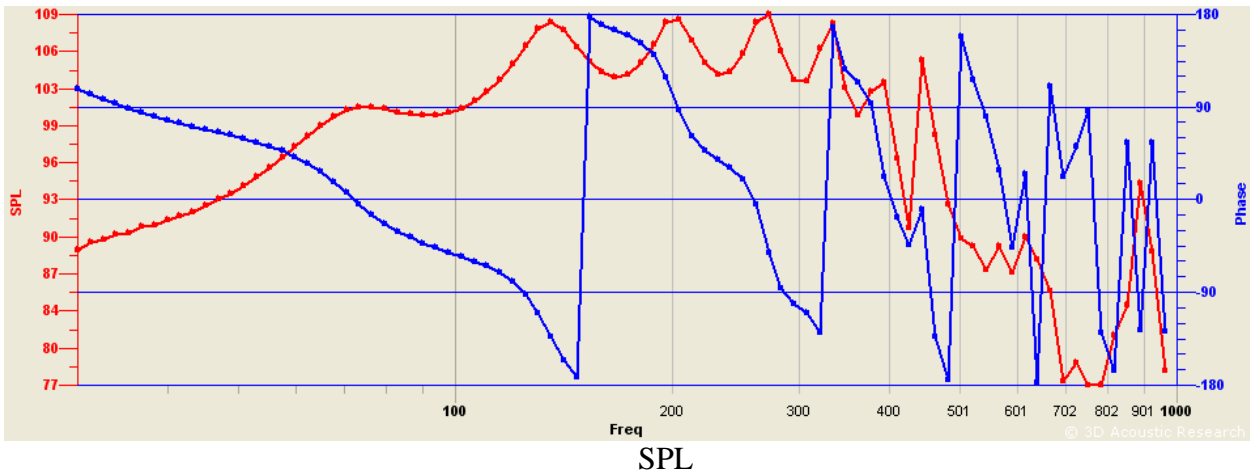


Fig.7 Response at 1 m from horn exit.

This paper is the property of 3D Acoustic Research and no part from it can be used without clear reference to 3D Acoustic Research.